



FARM & FLEET

SAVE NOW

PLACE YOUR ORDER AT
PRO.NAPAPROLINK.COM

Pricing Valid
3/1/2026-3/31/2026

Agriculture | Construction | Fleet-For-Hire | Heavy Repair & Tire | OE Dealer | Private Fleet | Public Services | Public Transportation | Waste & Environmental

PARTS FOR EVERY INDUSTRY





TECHNICALLY HYDRAULIC



Hydraulic fluid performs multiple jobs. First and foremost, it transfers power, meaning low compressibility is very important, but it also lubricates and cools the equipment it operates on. While the importance of hydraulic fluid spans all categories of machinery, the medium and small farming segment, creates an important dynamic with equipment and fluid maintenance.

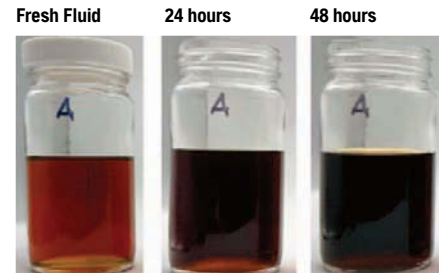
NAPA premium anti-wear (AW) hydraulic oil is designed to work for up to 7,000 hours of run time and meet the most stringent requirements of major equipment manufacturers.

Farming equipment uses 2.4 times as much fluid as construction equipment, and 40-60% of fluid use is generated in the spring and fall during planting and harvest seasons. Couple this with the fact that 4 out of 5 tractors are more than five years old, these medium and small farms keep a strong focus on quality fluid and proper maintenance to avoid costly repairs.

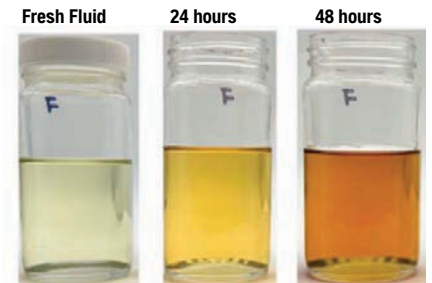
NAPA premium heavy-duty hydraulic fluid is the only product recommended for most agricultural tractors, regardless of age.

Picture the harsh environments of construction and agricultural equipment and it becomes clear why equipment manufacturers are strict about the specifications surrounding their recommended fluid. The most important advice is to always refer to manufacturer specifications to make sure the oil or fluid purchased is correct for the application.

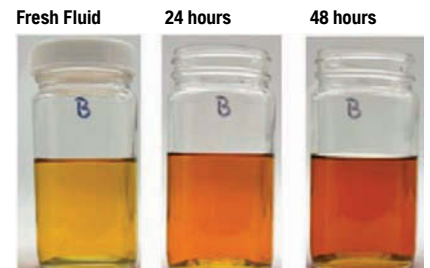
Competitor A



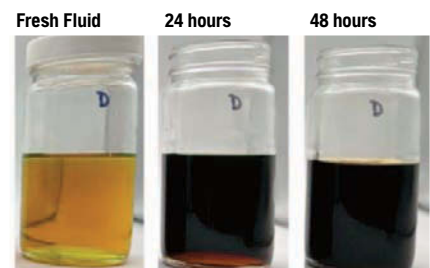
Warren Premium Fluid



Competitor B



Competitor C



BUILT FOR LONG DAYS. HEAVY LOADS. ZERO DOWNTIME.

TRUSTED HYDRAULIC PERFORMANCE FOR FARM
EQUIPMENT, SEASON AFTER SEASON.



85-405 NEW LOOK
SAME TRUSTED FLUID

NAPA Premium Hydraulic Fluids are engineered to protect today's hardworking farm equipment. Designed to perform in tough conditions and heavy-duty applications, these fluids help reduce wear and keep your operation moving when it matters most.

| PART | DESCRIPTION | UOM |
|--------|---|--------|
| 85-405 | Premium Heavy Duty Tractor Hydraulic & Transmission Fluid | 5 Gal. |
| 85-905 | Premium AW-32 Hydraulic Oil | 5 Gal. |
| 85-805 | Premium AW-46 Hydraulic Oil | 5 Gal. |
| 85-705 | Premium AW-68 Hydraulic Oil | 5 Gal. |
| 85-105 | Premium AW-22 Hydraulic Oil | 5 Gal. |

**BECAUSE THE WORK DOESN'T STOP,
AND NEITHER SHOULD YOUR EQUIPMENT.**

LEARN MORE





HYDRAULICS

TOUGH ENOUGH FOR THE JOB, FLEXIBLE ENOUGH FOR THE FIELD

Gates Ag Master industrial hose is designed for agricultural spraying applications, such as diluted solutions of herbicides and fertilizers. It can also be used for air and water applications requiring maximum flexibility.

- For pesticides or herbicides containing more than 2% Toluene or Xylene, use Gates Chem Master™ Paint Spray.
- Outstanding resistance to heat and ozone.
- Sizes: 1/4" to 1-1/2".

KEY APPLICATIONS:

- Agricultural spraying
- Fertilizer and chemical transfer
- Liquid fertilizer nurse tanks

STOCK SUGGESTIONS:

- 6AG6000 (3/8" x 300')
- 8AG6000 (1/2" x 300')



BUY \$1000 IN INDUSTRIAL HOSE AND EARN A SWAG BAG FOR YOUR TEAM

SWAG BAG INCLUDES:

- [5] Gates baseball caps
- [5] Pairs of Gates work gloves
- [5] Gates rechargeable headlamps
- **\$300 VALUE**



5X HEADLAMP



5X GLOVES



5X HAT

\$300 VALUE

Promo Details: Buy \$1000 in GAT Group Code 6 to Earn Gates Swag Bag. Purchases will be tracked by NAPA HQ and no submissions will be required. All incentives will be mailed within 6 weeks after the promotion has ended. For more details, speak to your NAPA Representative.

Promo Dates: March 1 - 31, 2026

Only NAPA Installer Rewards members and Auto Care Centers are eligible. Contact your local NAPA AUTO PARTS store to enroll in the 2026 NAPA Installer Rewards program.

© 2026 NAPA / GATES

BLASTER

WORK IT LIKE A PRO



| | | | | | | | |
|---------------------|--|----------------|----------------|-------------------|--------------------------------|--------------|-----------------|
| NCB GR14CHTR | Extra-Tacky Red Grease Cartridge | 14 oz. | \$5.19 | NCB 128PWS | Parts Washer Solvent Pour Can | 128 oz. | \$32.49 |
| NCB 16PBDS | The Original PB B'laster Penetrant | 11 oz. | \$5.99 | NCB SW4 | GUNK Swab Concrete Cleaner | 25 lb. | \$71.99 |
| NCB GR8APB | Original PB Penetrating Lithium Grease | 8 oz. | \$7.99 | NCB 128SS | Surface Shield Rust Protectant | 1 gal. | \$82.99 |
| NCB 16SS | Surface Shield Rust Protectant | 12 oz. | \$12.49 | NCB 5PWS | Parts Washer Solvent Pail | 5 gal. | \$90.99 |
| NCB 17MRG | Metal Rescue Rust Remover Gel Jar | 17.64 oz. | \$14.49 | NCB 5SS | Surface Shield Rust Protectant | 5 gal. | \$307.99 |
| NCB 128MR | Metal Rescue Rust Remover Bath | 1 gal. | \$27.29 | | | | |

BLASTER

SAVE UP TO 19%



| | | | | | |
|----------------------|------------------------|--------------------|------------------------|----------------------|--|
| NCB BLA405 | R-134a Recharge Hose | NCB BLA310 | R-134a W/Stop Leak | NCB BLA606YF | R-1234yf A/C Leak Seal W/Safe Seal 3 oz. |
| NCB BLA451YFA | R-1234yf Recharge Hose | NCB BLA151 | R-1234yf W/Stop Leak | NCB BLA601YF | R-1234yf A/C Refill W/ Safe Seal 8 oz. |
| NCB BLA155 | R-134a Triple Seal | NCB BLA346A | R-134a Ac Recharge Kit | NCB BLA602YFD | R-1234yf A/C Recharge Kit W/Smart Clips |

For complete details and to place orders, go to pro.NAPAprmlink.com

CRC® Heavy Duty Silicone Lubricant

7.5 oz.

CRC 05074

\$457
/each



Starting Fluid W/ Lubricity

7.5 oz.

CRC 05671

\$580
/each



Brakleen® Non-Chlorinated Brake Parts Cleaner

14 oz.

STARTING AT

\$644
/each



CRC 05050PS 50 State.....**\$6.44**

CRC 05084PS Low VOC.....**\$6.44**

CRC 05088PS High Strength.....**\$6.44**

Brakleen® Non-Flammable Brake Parts Cleaner

19 oz.

CRC 05089PS

\$859
/each



Pro-Strength Degreaser

15 oz.

CRC 05482

\$698
/each



STARTING AT

\$719
/each



SL SL3190 Sta-Plex Extreme Pressure Premium Red Grease.....**\$7.19**

SL SL3330 Extreme Pressure Moly-Graph Grease.....**\$7.81**

SL SL24239 G14 Gear Oil 90w 1g.....**\$46.29**

Parts Cleaner & Degreaser

18 oz.

CRC 1751863

\$859
/each



Copper Coat Aerosol

18 oz.

CRC 401612

\$891
/each



Food Grade Silicone

10 oz.

CRC 03040

\$1492
/each



Knock'er Loose Penetrant

13 oz.

CRC 03020

\$1696
/each



Foaming Coil Cleaner

18 oz.

CRC 03196

\$1697
/each



EVAPOR-RUST® Super Safe Rust Remover

1 gal.

CRC 1752538

\$2335
/each

3.5 gal.

CRC 1752540

\$6688
/each

5 gal.

CRC 1752542

\$7807
/each



Food Grade Chain Lube

12 oz.

CRC 03055

\$2471
/each





It's not just Green in color,
but Green because it's SAFER.

An EPA Safer Choice Certified alternative to caustic or acidic cleaners, bleaches, and solvents. This concentrated formula cleans and degreases without abrasive chemicals. Removes dirt, grease, oil, and stains from all washable surfaces.

This certification standard recognizes products that perform and are safer for use around people, pets, wildlife, and the environment.



| | | | |
|-----------|--------------------------------|----------------|----------------|
| NCB 13013 | All Purpose Cleaner | 24 fl oz. | \$5.49 |
| NCB 13005 | Industrial Cleaner & Degreaser | 1 gal. | \$14.79 |
| NCB 13006 | Industrial Cleaner & Degreaser | 5 gal. | \$67.99 |



STARTING AT
\$7.49
/each

| | | | |
|-----------|---------------------------------------|----------------|----------------|
| NCB 25217 | Fine Pumice Lotion Hand Cleaner | 64 fl oz. | \$7.49 |
| NCB 25219 | Hand Cleaner | 40 fl oz. | \$11.49 |
| NCB 22340 | Grease X Mechanic's Laundry Detergent | 1 gal. | \$12.99 |
| NCB 25618 | Xtreme Hand Cleaner | 1 gal. | \$14.99 |



**Spray Nine Multi Purpose
Cleaner & Disinfectant**

32 oz.

NCB 26832

\$4.59
/each



**Spray Nine Multi Purpose
Cleaner & Disinfectant**

32 oz

NCB 26801

\$11.99
/each



WEITRON

R-1234yf Oil

8 oz.

NFR W2458

\$849
/each



R-134 Can Refrigerant

12 oz.

NFR ZX3012SS

**CALL
FOR
PRICING**



R-1234yf Refrigerant

8 oz.

NFR R1234YFCAN

\$2099
/each



R-1234yf UV Dye

8 oz.

NFR R1234YFCANUV

\$2349
/each



NAPA® Premium Performance Motor Oil

1 qt.

STARTING AT

\$349
/each



NAPA® Heavy Duty Diesel Universal Fleet Plus Synthetic Blend Motor Oil

1 gal.
10W30

NOL 891953

\$1399
/each



NOL 75110 SAE 30W.....**\$3.49**
NOL 75120 SAE 40W.....**\$3.79**

NAPA® Heavy Duty Diesel Universal Fleet Plus Synthetic Blend Motor Oil

1 gal.
5W40

NOL 891939

\$1999
/each



NAPA® Heavy Duty Universal Fleet Plus Engine Oil

2.5 gal.
15W40

NOL 904819

\$3299
/each



NAPA® Motor Oil Conventional

5 gal.

STARTING AT
\$6299
/each



NOL 75126 SAE 30W.....**\$62.99**
NOL 75118 SAE 40W.....**\$66.99**

NAPA® Universal Fleet Plus Motor Oil

1 qt.
15W40

NOL 75123

\$369
/each

1 gal.
15W40

NOL 75122

\$1299

5 gal.
15W40

NOL 75121

\$6499

55 gal.
15W40

NOL 75128

\$68999



NAPA® Fleet High Detergent Motor Oil Diesel Engine Oil

6 gal.
15W40

NOL 869974

\$7899
/each

NAPA® Fleet Heavy Duty Diesel Full Synthetic Motor Oil

6 gal.
5W40

NOL 892056

\$11799
/each

NAPA® Heavy Duty Diesel Motor Oil

55 gal.
5W40

NOL 895046

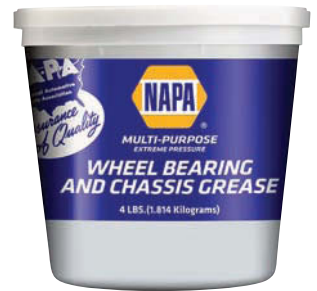
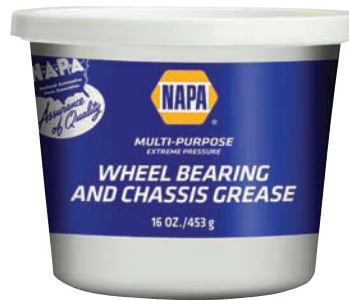
\$1,08499
/each





STARTING AT
\$324
/each

| | | |
|------------|-----------------------------|----------------|
| VAL 914080 | NAPA Hightemp Red Grs | \$3.24 |
| VAL 75600 | NAPA Ep Grease Cart..... | \$3.24 |
| VAL 75601 | NAPA Ep Grease 1#Can | \$4.79 |
| VAL 75602 | NAPA Ep Grease 4#Can | \$17.99 |



Zerex™ Cooling System
Antifreeze/Coolant
1 gal.

STARTING AT
\$949
/each

| | | |
|-------------|-----------------------------|----------------|
| ZRX ZXPCRU1 | HD Green Ready to Use | \$9.49 |
| ZRX 846437 | Ready to Use..... | \$11.99 |
| ZRX 895622 | Ready to Use..... | \$11.99 |



Zerex™ HD Extended Life
Antifreeze/Coolant
1 gal.

AS LOW AS
\$1199
/each

| | | |
|-------------|-------------------------------|----------------|
| VAL ZXEDRU1 | Ready to Use..... | \$11.99 |
| VAL ZXED1 | Concentrate..... | \$15.99 |
| VAL 846439 | Nitrite Free Concentrate..... | \$16.99 |



Zerex™ Cooling System
Antifreeze Coolant
Ready to Use
1 gal.

ZRX 841943
\$979
/each



STARTING AT
\$589
/each



| | | | |
|-----------|-----------------------------------|--------------|-----------------|
| LUC 11238 | Sure Start Premium Starting Fluid | 10.7 oz..... | \$5.89 |
| LUC 10301 | X-Tra Heavy Duty Grease | 14.5 oz..... | \$6.79 |
| LUC 10005 | Red 'N' Tacky #2 Grease | 14 oz..... | \$7.29 |
| LUC 10043 | 80-90 Gear Oil | 32 oz..... | \$9.59 |
| LUC 10042 | 85w140 Gear Oil | 1 qt..... | \$9.59 |
| LUC 11025 | Red 'N' Tacky Grease | 11 oz..... | \$12.39 |
| LUC 10047 | 75W90 Synthetic Gear Oil | 1 qt..... | \$15.99 |
| LUC 10045 | SAE 85W-140 Heavy Duty Oil | 1 gal..... | \$20.39 |
| LUC 10046 | SAE 80W-90 Heavy Duty Oil | 1 gal..... | \$23.79 |
| LUC 10013 | Upper Cylinder Lubricant | 1 gal..... | \$29.99 |
| LUC 10002 | Heavy Duty Oil Stabilizer | 1 gal..... | \$30.99 |
| LUC 10048 | SAE 75W-90 Trans Lube | 1 gal..... | \$42.59 |
| LUC 10027 | Grease Nlg#2 | 4 gal..... | \$159.99 |



STARTING AT
\$2699
/each

| | | | |
|------------|-------------------------|------------|----------------|
| MOB 126085 | Delvac 1 5W-30 | 1 gal..... | \$26.99 |
| MOB 127863 | Delvac 1 ESP 5W-40 | 1 gal..... | \$26.99 |
| MOB 122062 | Delvac 1 ATF | 1 gal..... | \$34.95 |
| MOB 124788 | Tractor Hydraulic Fluid | 5 gal..... | \$79.99 |



Valvoline™ Grease

AS LOW AS
\$4.39
/each

| | | | |
|------------|---|--------------|-----------------|
| VAL 70124 | Crimson #2 Multi-Purpose Grease | 14 oz..... | \$4.39 |
| VAL 70133 | Cerulean #2 Multi-Purpose Grease | 14 oz..... | \$4.49 |
| VAL 70112 | Palladium #2 with Moly Multi-Purpose Grease | 14 oz..... | \$4.69 |
| VAL 872117 | Cobalt #2 Grease | 14 oz..... | \$5.39 |
| VAL 985 | Synpower Synthetic Grease | 14 oz..... | \$7.49 |
| VAL 70122 | Crimson #2 Multi-Purpose Grease | 35 lbs..... | \$129.99 |
| VAL 70120 | Crimson #2 Multi-Purpose Grease | 120 lbs..... | \$429.99 |



Valvoline™ General Purpose EP Grease

STARTING AT
\$4.49
/each

| | | |
|---------|--------------|-----------------|
| VAL 609 | 14 oz..... | \$4.49 |
| VAL 608 | 1 lb..... | \$4.99 |
| VAL 606 | 35 lbs..... | \$139.99 |
| VAL 605 | 120 lbs..... | \$459.99 |

Valvoline™ Multi-Purpose Grease

STARTING AT
\$4.69
/each

| | | |
|---------|--------------|-----------------|
| VAL 615 | 14 oz..... | \$4.69 |
| VAL 614 | 1 lb..... | \$5.19 |
| VAL 616 | 4 lbs..... | \$19.99 |
| VAL 612 | 35 lbs..... | \$144.49 |
| VAL 611 | 125 lbs..... | \$469.99 |

Valvoline™ Moly-Fortified Multi-Purpose Grease

STARTING AT
\$4.69
/each

| | | |
|---------|-------------|-----------------|
| VAL 633 | 14 oz..... | \$4.69 |
| VAL 632 | 1 lb..... | \$5.19 |
| VAL 630 | 35 lbs..... | \$144.49 |



Valvoline™ Premium Blue Heavy Duty Engine Oil

1 gal.

STARTING AT
\$15.99
/each

| | | | |
|------------|-----------------|------------|----------------|
| VAL 773780 | SAE Engine Oil | 15W40..... | \$15.99 |
| VAL 818289 | Synthetic Blend | 10W30..... | \$16.99 |
| VAL 774038 | Pr/Blue Xtr | 5W40..... | \$23.99 |



HARDWORKING PROTECTION FOR DIESEL ENGINES.



- » Up to 50% more wear protection than required in API engine tests
- » Delivers high performance in on- and off-highway applications
- » Extends engine life and meets or exceeds OEM requirements

| | | |
|--------------------------------|--------|----------------|
| Mobil Delvac Extreme 10W-30 | 122454 | \$20.99 |
| Mobil Delvac Extreme 15W-40 | 122448 | \$20.99 |
| Mobil Delvac 1300 Super 10W-30 | 122485 | \$17.99 |
| Mobil Delvac 1300 Super 15W-40 | 122492 | \$17.99 |

© 2026 ExxonMobil. Mobil Delvac, Mobil, Mobil 1, and the 1 icon are trademarks or registered trademarks of Exxon Mobil Corporation or one of its subsidiaries. Other trademarks shown are property of their respective owners. All rights reserved.



Shell Rotella® Tube/Cartridge
1 gal.

\$549
/each



- SHE 550049923 Multi-Purpose Lithium Grease
- SHE 550049924 Extreme Temperature Tacky Grease
- SHE 550049925 Premium Heavy Duty Grease
- SHE 550049926 Special Duty Moly Grease

Shell Rotella® T4 Triple Protection Motor Oil

STARTING AT
\$1729
/each



- SHE 550045126 15W40 1 gal. **\$17.29**
- SHE 550045128 15W40 5 gal. **\$85.99**
- SHE 550045148 15W40 55 gal. **\$924.99**

Shell Rotella® T6 Synthetic Motor Oil

STARTING AT
\$2499
/each



- SHE 550045347 5W40 1 gal. **\$24.99**
- SHE 550050467 15W40 1 gal. **\$24.99**
- SHE 550046215 5W40 2.5 gal. **\$61.49**
- SHE 550046217 5W40 5 gal. **\$122.49**
- SHE 550062921 15W40 5 gal. **\$122.49**
- SHE 550046219 5W40 55 gal. **\$1,269.99**

Shell ROTELLA® Heavy Duty Tractor Transmission Fluid

5 gal.
SHE 550039811

\$7799
/each



Shell Spirax S6 Automatic Transmission Fluid ATF A668

1 gal.
SHE 550062008

\$4599
/each

5 gal.
SHE 550062007

\$21149

5 gal.
SHE 550062005
\$2,22499





HEAVY DUTY ANTIFREEZE & COOLANT RED

NITRITE FREE EXTENDED LIFE HEAVY DUTY ANTIFREEZE & COOLANT RED IS AN ORGANIC ACID TECHNOLOGY



CONCENTRATE
1 GALLON
NFHD
\$10.19

- Prevents wet sleeve liner pitting and corrosion of all cooling system metals
- Extended Service Life- up to 1,000,000 miles/8 years or 20,000 hours protection*
- Compatible with most major OEM brands of extended life coolants

*With proper maintenance and addition of an extender at 600,000 miles/4 years/10,000 hrs.

READY TO USE
1 GALLON
RTUNFHD
\$7.19



**STOCK UP,
VOLUME BUY**



CONCENTRATE
55 GALLON DRUM
55NFHD
\$522.79

READY TO USE
55 GALLON DRUM
RTU55NFHD
\$359.59



Proprietary formula helps prevent deposits that can build up in the SCR system.

AMERICA'S
#1
DEF BRAND



**TRIPLE-FILTERED +
GUARANTEED PURE**

2.5 GALLON • DEG002
\$20.89

55 GALLON DRUM • DEG001
\$427.85



SAVE UP TO 48% ON ANTIFREEZE + COOLANT

A PERFECT MATCH FOR EVERY VEHICLE



PEAK OET CONCENTRATE \$14.99

PEAK OET 50/50 READY TO USE \$11.89

OEM TECHNOLOGY SPECIFICALLY DESIGNED FOR NORTH AMERICAN, ASIAN, AND EUROPEAN VEHICLES.



YEAR-ROUND ENGINE PROTECTION

**PEAK® ALL VEHICLES
ANTIFREEZE + COOLANT**

**10+ YEARS
300,000+ MILES**

*10+ years/300,000 miles guarantee when a complete cooling system flush and fill is performed and proper cooling system maintenance is followed. Always follow vehicle owner's manual for top-off requirements, change intervals and specified maintenance. See PEAKGuarantee.com for more details.



**CONCENTRATE
1 GALLON
PKPOB3
\$13.90**



**READY TO USE
1 GALLON
PKPB53
\$10.99**

HEAVY-DUTY ANTIFREEZE + COOLANT

FINAL CHARGE®

PRO-SERIES

HEAVY DUTY PERFORMANCE

1.5 MILLION
MILES

36,000
HOURS

10
YEARS

FOR ALL HEAVY DUTY ENGINES



READY TO USE
1 GALLON
FPRB53
\$12.09

CONCENTRATE
1 GALLON
FPROB3
\$20.29

FLEET CHARGE®

THE ORIGINAL FULLY FORMULATED SUPPLEMENTAL COOLANT ADDITIVE (SCA) ANTIFREEZE + COOLANT



READY TO USE
55 GALLON • FCAB51
\$398.19

READY TO USE
1 GALLON • FCAB53
\$8.99



CONCENTRATE
55 GALLON • FCAOB1
\$628.32

CONCENTRATE
1 GALLON • FCAOB3
\$15.39

FLEET CHARGE® SCA MEETS OR EXCEEDS ALL HEAVY-DUTY AND AUTOMOTIVE SPECIFICATIONS.



New fastener bin assortments now available.

Choose with bins, without bins, or purchase bins separately. Keep popular hardware within arm's reach.

GRADE 8 COARSE THREAD ASSORTMENTS

| Product Only: | Product + Bin: |
|----------------|-----------------|
| RFD 8421-203-P | RFD 8421-203-PB |
| RFD 8421-205-P | RFD 8421-205-PB |
| RFD 8421-207-P | RFD 8421-207-PB |

GRADE 5 COARSE THREAD ASSORTMENTS

| Product Only: | Product + Bin: |
|----------------|-----------------|
| RFD 8421-234-P | RFD 8421-234-PB |
| RFD 8421-206-P | RFD 8421-206-PB |
| RFD 8421-208-P | RFD 8421-208-PB |

GRADE 5 FINE THREAD ASSORTMENTS

| Product Only: | Product + Bin: |
|----------------|-----------------|
| RFD 8421-235-P | RFD 8421-235-PB |

CLASS 10.9 COARSE THREAD ASSORTMENTS

| Product Only: | Product + Bin: |
|----------------|-----------------|
| RFD 8421-204-P | RFD 8421-204-PB |

CLASS 8.8 COARSE & FINE THREAD ASSORTMENTS

| Product Only: | Product + Bin: |
|----------------|-----------------|
| RFD 8421-202-P | RFD 8421-202-PB |
| RFD 8421-209-P | RFD 8421-209-PB |

STAINLESS STEEL CAP & MACHINE SCREW ASSORTMENTS

| Product Only: | Product + Bin: |
|----------------|-----------------|
| RFD 8421-238-P | RFD 8421-238-PB |

Available to special order through your local NAPA store

NOTE: Labels included with all kits.



Scan here for the full catalog.

Dorman Products, Inc. | ©2025 No reproduction in whole or part without written approval.
Farm-Fleet- Half-page-Ad_NAPA_NP1742709613



REDARC

REDARC TRAILER AUXILIARY CHARGING KIT AND ELECTRIC TOW PRO BRAKE CONTROLLERS AND ACCESSORIES

Charge and Monitor your Auxiliary Trailer Batteries while on the move, ensuring your batteries stay charged.

The REDARC Tow-Pro range contains revolutionary electric trailer brake controllers that deliver smooth, safe braking on all terrain and trailer types, including enclosed, flatbed, fifth wheel, gooseneck, livestock, RV, marine and dump trailers.

Tow-Pro Switch Insert Universal

BK TPS1001



Tow-Pro Vehicle Harness - Universal Barewire Harness

BK TPH025



Kit, Mounting Bracket ETBC

BK EBMK001



Tow-Pro Liberty Electronic Brake Controller

BK EBRHACCNA



Tow-Pro Elite Electric Brake Controller With Active Calibration

BK EBRHACC3NA



Tow-Pro Vehicle Harness - Hopkins Plug/Play

BK TPH018



Trailer Auxiliary Battery Power Charging Kit

BK BCDC1212S-1K1-NA





Rain-X® Latitude Rack and Latitude Rolling Rack Assortment

Lat Wr Rck Lat9p Asst

RNX 890106

\$685⁰⁰ /each



Rain-X® Latitude Rack and Latitude Rolling Rack Assortment

Lat Wr Rck Rx103 Asst

RNX 890107

\$1,089⁰⁰ /each



Slime Tire Sealant

24 oz.

NCB SLIME10008

\$12⁵⁹ /each



Slime Tire Sealant

1 gal.

NCB 10163

\$30⁶⁹ /each





SEE BETTER, DRIVE SAFER NIGHTVISION™

STOCK UP TODAY

CAPTURE NEW BUSINESS AND GROW PROFITS WITH NIGHTVISION™ LED LAMPS

- Enhanced brightness and clarity for increased visibility and safety
- For Fog Lamp, Off-Road and motor sport applications only

ITEM NUMBERS INCLUDE:

- | | |
|-------------------|--------------------|
| 9003NVLED2 | H11NVLED2 |
| 9005NVLED2 | H7NVLED2 |
| 9006NVLED2 | H6054NVLEDN |
| 9007NVLED2 | H6024NVLEDN |
| 9008NVLED2 | H4651NVLEDN |
| 9012NVLED2 | H4666NVLEDN |
| 9145NVLED2 | H4656NVLEDN |

CONTACT YOUR LOCAL TSM WITH QUESTIONS

SAVE UP TO 22%

BEAM COLOR

2700K 3000K 3500K 4000K 5000K **6500K**

NEW

NAPA NIGHTVISION LED LAMPS
For off-road use only
6500K Bright White
2500/1900lm Lumens
28/28w Watts
12/12v Compatible
Contains: 2 LED lamps, 2 wiring control modules
10 YEAR WARRANTY
9003NVLED2

ORDER TODAY LMP GC: 41

FAN COOLED

NAPA NIGHTVISION LED SEALED BEAM
15,000 Life Hours
3 YEAR WARRANTY
6000K Bright White Color
2D1 High/Low Beam
1 Lamp

NAPA NIGHTVISION LED SEALED BEAM
15,000 Life Hours
3 YEAR WARRANTY
6000K Bright White Color
2D1 High/Low Beam
1 Lamp

ORIGINAL OE QUALITY EQUIPMENT

UP TO 39% OFF

NIGHTVISION™ LED SEALED BEAMS

- Ultra-bright white 6000K color, 1,900 Lumens
- Up to 10x longer than halogen lamps; glass lens and durable powder coated aluminum housing
- Industry leading warranty

WHEN SAFETY IS YOUR NUMBER ONE PRIORITY, GROTE'S GOT THE ANSWER.



WORKSHIELD[®] FEATURING HINVII TECHNOLOGY



SEE SAFETY IN A WHOLE NEW LIGHT.

Turn high-visibility clothing, reflectors, and equipment into active safety devices with Grote's WorkShield warning lights. Create a safer, more visible work zone with WorkShield by Grote.



| PART # | DESCRIPTION |
|---------|--|
| 79276 | 6 DIODE HINVII LED DIRECTIONAL |
| 79276-3 | 6 DIODE HINVII LED DIRECTIONAL, BULK PACK |
| 79266 | DUAL FUNCTION, 6 DIODE AMBER / 4 DIODE HINVII |
| 79266-3 | DUAL FUNCTION, 6 DIODE AMBER / 4 DIODE HINVII, BULK PACK |

AUXILIARY STROBE & STOP LAMP



PUT REAR-END ACCIDENTS IN THE REAR VIEW

Give following motorists greater warning of braking and increase your visibility with our new strobing warning light. Take safety to the next level with Grote's new Auxiliary Strobe & Stop Lamp.

**50%
PLUS**
**REDUCED
REAR-END
ACCIDENTS**



| PART # | DESCRIPTION |
|---------|--|
| 78462 | COMPACT AUXILIARY STROBE & STOP LAMP |
| 78462-3 | COMPACT AUXILIARY STROBE & STOP LAMP BULK PACK |
| 79212 | 6" OVAL AUXILIARY STROBE & STOP LAMP |
| 79212-3 | 6" OVAL AUXILIARY STROBE & STOP LAMP BULK PACK |

GREEN BOOM

REINVENTING OIL ABSORBENTS

EASIER OIL CLEANUP, WITH 3X LESS PRODUCT

SAVE UP TO 10%

On Green Boom Loose Sorbents & Absorbing Mats

| | | | |
|------------|-------------------------------|----------------|-----------------|
| NCB L0030S | GB Loose Sorbent (SKU L0030S) | 30 lb | \$79.99 |
| NCB M2015 | GB Absorbing Mats (SKU M2015) | 100 count..... | \$115.99 |



3 OZs
Traditional Absorbent



1 OZ
GB Loose Sorbent

SKU M2015

GB Absorbing Mats (SKU M2015) :

- Re-usable up to 7 times
- Effective in capturing oil and hydrocarbon spills, outperforming traditional products
- Each mat can absorb up to 20 times its own weight in petroleum-based liquids

SKU L0030S

GB Loose Sorbent (SKU L0030S) :

- Outperforms 3-1 over the Competition
- Clumps together for easier cleanup
- Made from 100% natural agricultural plant waste sourced from farms all over the USA
- Effective in capturing oil and hydrocarbon spills

AUTEL MAXI TPMS

NEW HEAVY DUTY TPMS SERVICE

AUTEL TPMS SERVICE TOOLS + 1-SENSOR KITS

MaxiTPMS® TS900 Cabinet Bundle **CALL FOR PRICING**
Part #TS900CAB2

- Professional Metal TPMS Cabinet with Lock 18" X 26" X 12"
- Includes the TS900K-8 tools and sensors, one additional bulk pack of sensors, one bulk pack of valves, the TS508WF in a cardboard box, and a TPMS cabinet



MaxiTPMS® ITS600 CV **CALL FOR PRICING**
Part #ATD700420

- Complete TPMS Service tool for Commercial Vehicles
- Industry-leading coverage for TPMS-enabled Trucks, Trailers, Buses
- Program Autel MX-Sensor CVS-A01433 MHZ Sensor to replace OE and programmed aftermarket sensors
- Separate Tractor & Trailer interfaces display up to 46 wheels & 12 axes
- Includes Deutsch 6 and 9-pin, and UNIU-4 DLC adapters



MaxiTPMS® TS900 **CALL FOR PRICING**
Part #ATDTS900

- Activate, Read, and Relearn ALL known TPMS sensors, including Tesla OE sensors
- Program Autel 1-Sensors and Bluetooth Low Energy (BLE) TPMS sensors
- All Systems Diagnostics with bi-directional controls, Active Tests and Special Functions
- Industry-leading Relearn-by-OBD coverage and extensive Service Menu with 40-plus service tasks



MX-Sensor CVS-A01 TPMS Sensor for Commercial Vehicles

CALL FOR PRICING
Part #ATD300170

- Includes metal band to attach sensor to rim, compatible with rims sized 14 to 24.5-inches



CALL FOR PRICING
Part #ATD300190

- Includes fabric band to attach sensor to rim, compatible with rims sized 14-17.5-inches



CALL FOR PRICING
Part #ATD300210

- Includes metal band to attach sensor to rim, compatible with rims sized 17.5 to 24.5-inches



MaxiTPMS® TS508WF-8 Kit **CALL FOR PRICING**
Part #AD7700020

- TS508WF Kit including 8 1-Sensors
- TS508 Wi-Fi handheld TPMS tool
- Updated software via Wi-Fi
- Program Autel 1-Sensors
- Exclusive TPMS Status Screen



MaxiTPMS® ITS600 **CALL FOR PRICING**
Part #ATDITS600

- Compatible with Autel BLE Sensor
- TPMS Service + 4 Service Resets
- Activate, Read & Relearn All Known Sensors
- Program Autel MX-Sensors



MaxiTPMS® ITS600K8 Kit **CALL FOR PRICING**
Part #ATD700130

- ITS600 Kit including 8 1-Sensors



LASER TIRE TREAD EXAMINER
+ EASY TO SHARE REPORTS

MaxiTPMS® TBT200 **CALL FOR PRICING**
Part #ATDTBT200

- Tire Tread and Brake Disc Wear Examiner
- Laser-Enabled; No Need to Remove Tire
- Full Color Touchscreen Display Illustrates Wear
- 2 Cameras to Document Tire Damage
- Scan Tire Identification Number (TIN)
- Tire health report QR code for easy sharing



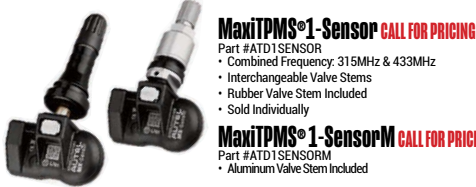
UNIVERSAL 1-SENSORS - REPLACE 99% OF OE SENSORS ON THE ROAD

MaxiTPMS® 1-Sensor **CALL FOR PRICING**
Part #ATD1SENSOR

- Combined Frequency: 315MHz & 433MHz
- Interchangeable Valve Stems
- Rubber Valve Stem Included
- Sold Individually

MaxiTPMS® 1-SensorM **CALL FOR PRICING**
Part #ATD1SENSORM

- Aluminum Valve Stem Included



SAVE SPACE & MONEY WITH 1-SENSOR BULK PACKS

MaxiTPMS® 1-Sensor 20 Packs **CALL FOR PRICING**
Part #ATD300010

- Package of 20 1-Sensors with Rubber Valves

CALL FOR PRICING
Part #ATD300060

- Package of 20 1-Sensors with Aluminum Valves

MaxiTPMS® 1-Sensor 240 Bulk Pack **CALL FOR PRICING**
Part #ATD300050

- Package of 240 Autel 1-Sensors with Rubber Valve Stems



FLEXZILLA QUIETEST COMPRESSOR ON THE MARKET

| Part No. | HP Spec | Tank Size | Pump Style | Price |
|-----------------|---------|-----------|---------------|------------|
| FXZ FS05V080I1 | 5 HP | 80 GAL. | Pressure..... | \$4,058.36 |
| FXZ FXS07V080V1 | 7.5 HP | 80 GAL. | Pressure..... | \$4,800.90 |
| FXZ FXS10V080V1 | 10 HP | 80 GAL. | Pressure..... | \$5,289.53 |
| FXZ FXS10V120V1 | 10 HP | 120 GAL. | Pressure..... | \$6,466.01 |

ALL SINGLE PHASE UNITS SHIP NEXT BUSINESS DAY

QUIET TECHNOLOGY™



REDUCES HIGH FREQUENCY NOISE LEVELS

SILENCER
PATENTED NOISE SUPPRESSION



REDUCES LOW FREQUENCY NOISE LEVELS



\$3,305

**13HP
30 Gallon**

- Honda Engine
- 25 CFM @175 PSI

NAC ABC1330GH

\$1,258

**5.5HP, 8 Gallon
Twin Tank**

- Vanguard Engine
- 11.1 CFM @40 PSI

NAC G15H8WQ

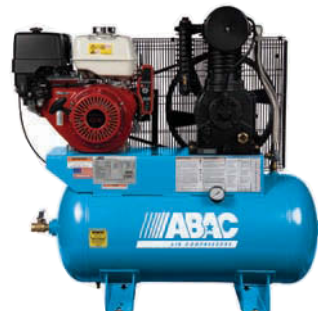
\$4,515

**16HP,
30 Gallon**

- Vanguard Engine
- 32 CFM @175 PSI

NAC ABC1630GV

GAS-POWERED AIR COMPRESSORS



NAC ABC13-30GH



NAC ABC16-30GV

1234yf is here for semis and off-highway vehicles

Most major manufacturers will adopt the new refrigerant starting in 2025



COMMITTED TO QUALITY BECAUSE YOUR REPUTATION DEPENDS ON IT.

What is needed to service R-1234yf systems?

- A new machine meeting SAE and J2843 standards; Robinair's AC12344, AC12349 and AC12344SL
- A new leak detector meeting SAE J2913 standards; Robinair's LD3, LD5 or LD7
- A syringe-type oil injector to inject oil back into the system; Robinair's 18465

ROBINAIR

Why Robinair?

- Robinair created the first commercially available R-1234yf machine in North America to fully meet the SAE's requirement for R-1234yf recovery, recycling and recharging
- New connected machines and accessories for industry-leading connectivity, service and reporting
- Unmatched efficiency means more refrigerant is recovered for more accurate charging

MAHLE

ShopPRO

| | | |
|----------------|--|--------------------|
| RTI 4858001000 | CSS-25 - 25 ton Commercial Vehicle Support Stand | \$1,078.47 |
| RTI 4858001200 | CSS-35 - 35 ton Commercial Vehicle Support Stand..... | \$1,216.72 |
| RTI 4858010700 | CVS-7H - 7 ton Vehicle Support Stand - High Rise..... | \$1,716.29 |
| RTI 4858010900 | CVS-10H - 10-ton Vehicle Support Stand - High Rise | \$1,804.49 |
| RTI 4858005100 | CAJ-25 - 25 ton Commercial Vehicle Axle Jack | \$2,241.04 |
| RTI 4858001900 | 10 Ton Bottle Jack..... | \$2,662.00 |
| RTI 4858005400 | CAJ-35 - 35 ton Commercial Vehicle Axle Jack | \$3,881.17 |
| RTI 4858009500 | Mobile Column..... | \$48,311.00 |
| RTI 4858009900 | Mobile Column..... | \$58,149.00 |



MASTER

THE PROFESSIONAL'S CHOICE SINCE 1953



| | | | | | | | |
|---------------|---------------------|----------|-----------------|----------------|-----------------------|----------|-----------------|
| MHR MAC20F | Master Shop Fan | 20"..... | \$79.99 | MHR MAC30BCT | Master Shop Fan | 30"..... | \$224.99 |
| MHR MAC18WB | Wall Fan | 18"..... | \$114.99 | MHR MAC36BDF | Belt Drive Barrel Fan | 36"..... | \$454.99 |
| MHR MAC18WW | Wall Fan | 18"..... | \$114.99 | MHR 36MACAPBDF | Shop Fan | 36"..... | \$419.99 |
| MHR MAC24DCT | Master Shop Fan | 24"..... | \$169.99 | MHR 42MACAPBDF | Shop Fan | 42"..... | \$459.99 |
| MHR MAC24W | Wall Fan | 24"..... | \$179.99 | MHR 48MACAPBDF | Shop Fan | 48"..... | \$499.99 |
| MHR MAC24WOSC | H Vel Osg Mount Fan | 24"..... | \$189.99 | MHR MAC42BDF | Shop Fan | 42"..... | \$524.99 |
| MHR MAC30P | Master Shop Fan | 30"..... | \$224.99 | MHR MAC48BDF | Shop Fan | 48"..... | \$599.99 |

OZZYMAT® Multi-Layer Fluid Activation Mat

SW FL4

\$2249
/each



- Multilayer OZZYMAT For Normal To Heavy Particulate Cleaning Applications.
- One filter with multiple layers for heavy duty applications. For use with SmartWasher® Parts Cleaning System
- Change every 30 Days or (1) Month Use.

OZZYJUICE® Truck Grade Degreasing Solution

5 gal.

\$10449
/each

- SW SW3 OzzyJuice® SW-3 Truck Grade Degreasing Solution
- SW SW4 OzzyJuice® SW-4 Heavy Duty Degreasing Solution
- SW SW7 OzzyJuice® Parts/Brake Cleaning Solution
- SW SW8 OzzyJuice® Aircraft & Weapons Degreasing Solution

- Armed with superior cleaning capability, OzzyJuice® solutions will match or surpass the performance of premium solvents without all the associated risks.
- All OzzyJuice® solutions are certified by both NSF and SCAQMD.
- Parts cleaning in preventative maintenance & repair facilities, industrial manufacturing plants, automotive repair shops, metal fabricators

CRC SMARTWASHER® Supersink Parts Washer Kit

\$3,149⁰⁰
/each

- SW SW337 Mobil Prt Washr W/Sw3
- SW SW437 Mobil Prt Washr W/Sw4
- SW SW737 Mobil Prt Washr W/Sw7
- SW SW837 Mobil Prt Washr W/Sw8



- Each kit includes: 1 SW37 SmartWasher® Unit, 5 5-Gallon jugs of SW3, SW4, SW7 or SW8 cleaning fluid, and 1 regular grade FL4 OZZYMAT filter.



Mobile Parts Washer Kit 1 Kit

\$2,249⁰⁰
/each



- SW SW323 Brake Washer W/SW-3
- SW SW423 Parts/Brake Wash-SW4
- SW SW723 Parts/Brake Wash-SW4
- SW SW823 Parts/Brake Wash-SW8

- Parts Washing Power and Mobility
- The CRC SmartWasher® SW-423 Mobile Parts Washer Kit ships ready for fast installation, fully assembled at delivery. Simply lay the enclosed OzzyMat® filter into the base of the sink and add the water-based parts cleaning solution into the tank. You are then ready to begin cleaning tough, impacted grease from engine parts, machinery parts, automotive parts, and marine parts. The SW-23 Mobile Parts and Brake Washer is sturdy enough to hold loads up to 400 lbs. To meet the job where needed, move the unit around the floor on the included dolly, featuring durable wheels with locking casters. That's a time saver
- Loaded with Features to Make the Job Easy
- Bioremediation: Heavy Duty Cleaning without the Environmental Impact
- Look to CRC SmartWasher® for eco-friendly cleaning solutions to help grow your business and meet sustainability goals

CHT CCBC1224V10A

\$160

12/24V CHARGER

- 6/12V, 20/10/2A
- Power Supply Mode for On-Vehicle Repairs
- Fully Automatic Operation
- Smart Clamp Technology
- Temperature Compensation
- Effectively Services Totally Dead (0.0V) Batteries
- LED Status Display
- Meets Energy Efficiency Requirements
- LiFePO4 Capability

1 YR LIMITED WARRANTY



CHT CCWC1224V60A

\$490

12/24V WHEEL CHARGER

- 12V, 60<->40/10A Charge, 250A Start
- 24V, 20/10A Charge
- PS Mode operation from 13.1V-14.9V
- Fully Automatic Operation
- Smart Clamp Technology
- Temperature Compensation
- Services Totally Dead (0.0V) Batteries

2 YR LIMITED WARRANTY



CHT CCWC1224V80A

\$600

12/24V WHEEL CHARGER

- 12V, 80<->60/60/40/10A Charge, 350A Start
- 24V, 40/20/10A Charge, 200A Start
- PS Mode operation from 13.1V-14.9V
- Fully Automatic Operation
- Smart Clamp Technology
- Temperature Compensation
- Services Totally Dead (0.0V) Batteries

2 YR LIMITED WARRANTY





Clore Automotive

Work Light
SOR LNC1841

\$74⁹⁰



Flashlight
SOR LNC375

\$69⁹⁹



LITHIUM 12 VOLT
JUMP STARTER

- SOR JNC345
- 3000 Amps
- Effective to -30°F
- 40" Cable Length
- #6 AWG Cables
- 2 USB Ports
- DC Output

\$280⁰⁰



550
START
ASSIST
AMPS

12V JUMP STARTER

- SOR ES5000
- 1500 Peak Amps
- 43" Cable Length
- #4 Gauge Cable

\$150⁰⁰



PRO-LOGIX BATTERY CHARGERS



PRO-LOGIX Battery Maintainer

- SOR PL4050
- 6/12V, 5 Amp x 1
- 12V, 5 Amp x 4
- 4 Independent Channels
- Forced Start Capability

\$250⁰⁰



12V Wheeled Charger with Engine Start

- SOR PL3740
- 40/15/5/225A
- Stable Power Mode
- Engine Start
- Analog Knob Controls
- Timed Charge Routines
- Automatic Charge Mode
- Ships Fully Assembled
- 2 Year Warranty

\$325⁰⁰



12/24v Jump Starter

- SOR ES1224
- 3000 Peak Amps (12V)
- 1500 Peak Amps (24V)
- 60" #2 AWG Cables

\$399⁰⁰

6/12v Digital Battery And System Tester With Integrated Printer

- SOR BA327
- 6/12V Battery Testing
- 1.5-30V Operating Range
- 40-2000 CCA Testing Range
- Extra-Long 10' Leads
- Temperature Compensation
- Multilingual Operation
- Replaceable Cable Ends

\$435⁰⁰



NEW PRODUCT

OPTIMAL REPROGRAMMING SUPPORT



\$875⁰⁰

120A
MAX
CHARGE

12/24
VOLT

LITHIUM
-LiFePO4-
OPTIMIZED

12/24V Heavy-Duty Reflashing 120A Power Supply and 120/60/40/10A Battery Charger

SOR PL6850

BOTH UNITS FEATURE:

- 13' Cable Reach
- Manages Sulfated Batteries
- Precise Voltage Control
- Automatic Charging Mode
- Power Supply Mode
- Temperature Compensation
- Charges Variety of Battery Types
- Reverse Polarity
- Forced Start Mode
- Battery Repair Mode
- Battery Fault Detection
- #2 AWG Cables
- PowerJaw™ Clamps
- Digital Display
- 1 Year Warranty

0-120A

(On Demand) 12V Power Supply Mode

0-60A

(On Demand) 24V Power Supply Mode

13.1V - 14.9V

Adjustable Power Supply

12 Volt

Power Supply Outlet

26.2-29.8V

24V Power Supply Outlet



All reflashing power supplies require 20A service.

FILL-RITE

STARTING AT
\$255⁰⁰
 /each

| | | |
|-------------|--|-------------------|
| BK 8213594 | Fuel Transfer Hand Pumps | \$255.00 |
| BK FR8 | DC 8 GPM Fuel Transfer Pump with Nozzle | \$430.00 |
| BK 8215871 | Transfer Pump Kit - 20 gal/hr, 12 Volt, DC | \$655.00 |
| BK 8213602 | Transfer Pump - Rotary, AC | \$790.00 |
| BK 8213603 | Transfer Pump - Rotary, AC | \$930.00 |
| BK FR4211HS | 12V DC 20 GPM Fuel Transfer Pump with Meter & Nozzle | \$1,139.00 |



John Deere Green Aerosol
 12 oz.
 DC 1932
\$8⁹⁹
 /each

John Deere Green
 32 oz.
 DC 2023
\$22⁹⁹
 /each

John Deere Green
 128 oz.
 DC 1966
\$59⁹⁹
 /each

- VAST LINE OF AEROSOLS, QUARTS AND GALLONS
- CORROSION RESISTANCE, DIRECT TO METAL
- FAST DRYING, LONG LASTING
- ROBUST COLOR CHOICES, HIGH-GLOSS FINISH

ODYSSEY[®] BATTERY



ODX-AGM31, ODX-AGM31A, ODX-AGM31R, ODP-AGM31, ODP-AGM31A, ODX-ACE31



FARM & FLEET BATTERIES



THE POWER TO GET THE JOB DONE

NAPA[®] BATTERIES offer one of the most complete lines of heavy-duty farm and agriculture batteries in the industry. These batteries not only look tough, but are built to be as durable and rugged as the applications they are used in.

- Maximum cranking power
- Easy-to-install OE design
- Farm tough construction
- Virtually 100% recyclable



| BCI Group Size | NAPA Battery Part No. | Volts | Warranty Months Free |
|----------------|-----------------------|-------|----------------------|
| 1 | 7244 | 6 | 6 |
| 2 | 7204 | 6 | 6 |
| 3EH | 7248 | 6 | 6 |
| 4 | 7212 | 6 | 6 |
| 1 | 8201D | 8 | 3 |
| 3ET | 7246 | 12 | 6 |
| 4D | 7266 | 12 | 6 |
| 4DLT | 7251 | 12 | 6 |
| 8D | 7271FT | 12 | 6 |
| 17TF | 7253 | 12 | 6 |
| 28 | 7228 | 12 | 6 |
| 30H | 7218 | 12 | 18 |
| 31 | 7234 | 12 | 18 |
| 31P | 7235 | 12 | 18 |
| 31 | 7236 | 12 | 18 |
| 31P | 7237 | 12 | 18 |
| 31 | 7238 | 12 | 18 |
| 31P | 7239 | 12 | 18 |



**HEAVY
DUTY
BATTERIES**



Now Available



**New to the
Haldex
Brake
Products
Family**

Standard Position
Value OEM & Better Aftermarket
6 Year Enhanced Warranty



WABCO SS1200 and SS1800
Fits Bendix® AD-9, AD-IP and AD-IS



Haldex
REMAN™

Reman Air Dryers

Remanufactured in the USA

- Full, comprehensive offering
- 100% cycle and pressure tested prior to shipment
- Industry competitive core values
- Backed by Haldex one-year/100,000 mile warranty protection



DISCOVER OUR ALL-STAR AIR DISC BRAKE LINEUP

- ▶ Premium Performance – Lowest cost per mile
- ▶ Great Availability – You want it, we've got it
- ▶ All New, No Cores
- ▶ Competitive Prices



www.gold-force.com
855-244-TZTZ (8989)



DTN 603-5505
Mack/Volvo 2024-08
OE #: 23915461



DTN 603-5107
International 2011-01
OE #: 2591802C1



DTN 603-5101
International 2002-95
OE #: 2002105C3



DTN 603-5203
Freightliner 2019-08
OE #: A0533118000

DAYTON

FLUID RESERVOIRS

**EVERYTHING YOU NEED
TO RELIABLY REPLACE A
RESERVOIR.**

Need an exact-fit replacement fluid reservoir with reliable quality and all the components required for installation?

Dayton Parts offers the most complete line of coolant, windshield washer fluid and power steering fluid reservoirs for the Heavy-Duty aftermarket, each of which is rigorously tested.



100% of all Dayton Parts now available from NAPA under one convenient DTN!

For additional parts and applications, visit us at DaytonParts.com



- **Thoroughly tested** - 500-hour heat age testing simulates 300,000 road miles to help ensure reliability
- **Premium materials** - upgraded polymers with proprietary compounds allow reservoir to expand and contract with temperature swings while maintaining high tensile strength
- **Exact fit** - reservoirs 3D-scanned to provide precise match to OEM shape and dimensions
- **Diverse solutions** - continued innovation includes replacements for medium and heavy duty vehicles
- **3-Year Limited Warranty**



**RECEIVE 10% OFF
THESE FEATURED RESERVOIRS AT
YOUR LOCAL NAPA STORE**

During Promotional Period Only
Promotion Effective March 1-31, 2026

NAPA GOLD® HEAVY-DUTY FILTERS NORTH AMERICAN MADE.



**OEM-GRADE FILTRATION BACKED BY
NORTH AMERICAN CRAFTSMANSHIP**

BUILT TO PERFORM.





Donaldson.
FILTRATION SOLUTIONS

***THE FULL CATALOG OF PREMIUM AIR,
OIL, HYDRAULIC AND FUEL FILTERS FROM
DONALDSON IS NOW AVAILABLE AT NAPA.***

That's more than **7,000** opportunities to provide your customers with heavy-duty filtration solutions to help them get the job done. Place your factory-direct order today.



**SCAN FOR EXPANDED
PRODUCT INFORMATION**



©2026 Donaldson Company, Inc.



AIR PRODUCTS

From Power Cord & Air Assemblies to Seals & Screens, our air products are designed and manufactured to meet or exceed the toughest industry standards.

| | |
|-------------------|--|
| 81-0001 | Universal Gladhand |
| 81-0001-B | Service Gladhand, Blue |
| 81-0001-R | Emergency Gladhand, Red |
| 81-0015 | 15' Coiled Air Set with 12" Leads |
| 81-0015-40 | 15' Coiled Air Set with 12" & 40" Leads |
| 81-3012 | Plug-and-Go™ 3-in-1, 12' with Rubber Grips |
| 81-3015 | Plug-and-Go™ 3-in-1, 15' with Rubber Grips |



FLEET TRAYS

Grote's Fleet & Installer Tray Assortments are designed to meet the specific inventory needs of your business. Streamline your shop inventory today.

| | |
|----------------|---|
| 83-6650 | Heat Shrink Term Fleet Tray Assortment |
| 83-6653 | Copper Lug Fleet Tray Assortment |
| 83-6654 | Tin Plated Copper Lug Tray Assortment |
| 83-6656 | Heat Shrink Tubing Tray Assortment |
| 83-6657 | Deutsch Terminal Tray Assortment |
| 83-6658 | Insulated Rubber Clamp Fleet Kit Assortment |
| 83-6659 | Fuse & Circuit Breaker Tray Assortment |



PRIMARY WIRE

Grote offers 100% pure copper General Purpose Thermoplastic Wire, available in a variety of gauges including 6, 8, 10, 12, 14, 16, 18, 20 and 22.

| | |
|----------------|--|
| 87-7000 | Primary Wire, 14 Gauge, Red, 100 ft Spool |
| 87-7002 | Primary Wire, 14 Gauge, Black, 100 ft Spool |
| 87-7006 | Primary Wire, 14 Gauge, Green, 100 ft Spool |
| 87-7007 | Primary Wire, 14 Gauge, White, 100 ft Spool |
| 87-7010 | Primary Wire, 14 Gauge, Blue, 100 ft Spool |
| 87-7011 | Primary Wire, 14 Gauge, Yellow, 100 ft Spool |



WIRE & CABLE

Grote offers Wire & Cable products in a variety of gauges, lengths, conductors, and colors to provide the best electrical connection in the industry.

| | |
|-------------------|---|
| 82-5824-FT | Trailer Cable, Low Temp., 4C, 14 Ga, 100' SP |
| 82-5828-FT | Trailer Cable, Low Temp., 7C4/12 2/10 1/8 Ga 100' SP |
| 82-6700-FT | Battery Cable, Red, 2/0 Ga, 100' Spool |
| 82-6712-FT | Battery Cable, Red, 4 Ga, 100' Spool |
| 87101 | Trailer Wiring, Coiled, 15', Green, ABS, 1/8, 2/10, 4/12 Ga |
| 87111 | Trailer Wiring, Coiled, 15', Black, Economy, 1/12, 6/14 Ga |
| 84-9089 | Cable Cutter, 22" |



BATTERY CONNECTORS & CABLES

Grote has a complete line of battery connectors, cable, replacement and service parts, test clips and terminal protection for all your equipment's power delivery needs.

| | |
|----------------|--|
| 83-6543 | Copper Tube Lug Assortment Kit, 76 Pk |
| 83-6544 | Copper Tube Lug, Tin Plated, Assortment Kit, 76 Pk |
| 84-9304 | Battery Harness, Stud-Stud, Neg, 8 1/2" |
| 84-9305 | Battery Harness, Stud-Stud, Pos, 8 1/2" |



SUPPORT & PROTECTIVE

Grote has everything to properly affix, hang, wrap, bundle and secure equipment's critical power delivery wires and cables in equipment and vehicles.

| | |
|----------------|---|
| 83-6019 | Standard Tie, Black, 7.6", 50 lb, Pk 100 |
| 83-6029 | Standard Tie, Black, 15", 120 lb, Pk 100 |
| 83-6514 | Standard Cable Tie Assortment, Assorted Colors, 50 Pk |



TRUSTED POWER. TESTED PERFORMANCE

**FEATURED
PRODUCTS:**



Why Choose Wilson?

- **Dependable Performance:** Every Wilson unit undergoes rigorous testing to ensure top-notch reliability on the road.
- **Heavy-Duty Durability:** Engineered with high-quality components to withstand the harshest working conditions.
- **OE-Quality Manufacturing:** Built to meet or exceed original equipment standards, providing consistent power and longevity.
- **Comprehensive Support:** Backed by a trusted warranty and an extensive parts network.

ALTERNATOR:
WILSON# 90-01-4297
(22SI)

STARTER:
WILSON# 91-01-4759N
(39MT)



3-IN-1 ELECTRICAL & AIR ASSEMBLIES

All in one assembly for quick and easy installation

- Factory applied thread seal
- Cable clamp is included for easy hanging and installation.
- Cost effective versus buying individual components.

NAPA 3-in-1 Electrical & Air Assembly

12' - *PHI 30112*

15' - *PHI 30115*

ELECTRICAL

Heavy-Duty reinforced zinc die-cast plugs for added durability.

AIR

Large red and blue handle grips for easy coupling/uncoupling. Provides excellent abrasion resistance and resists cracking, kinking, and weathering for temperatures -40F to 200F.



© 2026 National Automotive Parts Association LLC



TESTED, TRUSTED, STOPPING POWER

AIR DISC BRAKE CALIPERS



WHAT'S STOPPING YOU?

Nugeon Air Disc Brake Calipers

AVAILABLE NOW

Key Features

- Every unit is sustainably manufactured to **OE specs**, making it better than rebuilt, and **more cost effective than OE**
- Components are cleaned, inspected, and treated with **rust preventative coating**
- Every caliper is **tested** utilizing OE brake system analyzers
- All rubber components, bushings, and guide pins are replaced with **100% new OE quality** equivalents
- Castings are coated with **powder coating** and baked at 400 degrees
- Three(3) Year **Limited Warranty** for added reassurance

COVERING OE UNITS FROM BENDIX AND WABCO

99B90038-1
Fits Bendix ADB22X



99B90062-1
Fits Bendix ADB22X-LT RH



Toll-free Tech Support: 866-593-5566

©2026 National Automotive Parts Association LLC

NuGeon® is a registered trademark of TERREPOWER, formerly BBB Industries®

NAPA_NUG_ADB-01 1.225



AKEBONO
BRAKE EXPERTS

**NOTHING STOPS
LIKE SEVERE DUTY**

★ PROUDLY MADE IN THE USA ★

- Engineered for Severe Duty Applications
- Exceptional Stopping Power in Extreme Conditions
- Low Cost per Mile of Fleet Vehicles
- Extended Pad and Rotor Life for Fleet Durability
- The Industry's Lowest Return Rate
- Less Pad Wear Compared to Other Leading Brands
- Best ROI Providing 50% Longer-lasting Brake Pads Compared to Other Leading Brands

AKEBONO
SEVERE DUTY
ULTRA-PREMIUM FLEET BRAKE PADS

**Keep
Your Fleet
on the Street.**

PRIORITIZE UPTIME

KEEP CARGO ON THE MOVE

When it comes to commercial trucking, every detail matters. That's why we're here to shed light on your transportation needs. At Truck-Lite, we understand that safe and efficient cargo transport is essential. That's why we're your go-to partner for delivering excellence, day or night. Introducing Truck-Lite's Advanced Lighting Package for Commercial Trucking, featuring our new **Brake Activated LED Pulsating Stop Light** for additional safety on the road. This light acts as a Class 2 Strobe that pulsates amber for 4 seconds when brake is pressed, then holds a steady red for the duration of the time the brake is applied.



61500R



2026 Truck-Lite, LLC. a Clariance Technologies company

Truck-Lite[®]
A Clariance Technologies Company



NAPA NETWORK SCHOLARSHIP PROGRAM

Help Steer Bright Futures
In The Right Direction

BENEFITS:

Empower the next generation, be the champion your community needs.

Let TechForce handle scholarship management while you gain local visibility.

Join now with a low \$2,500 contribution; all fees are covered by NAPA corporate.



Scan QR Code To Sign Up

© 2026 National Automotive Parts Association LLC



FLEET ELITE



INTRODUCING NEW NAPA FLEET ELITE

- ◆ 6,000 NAPA STORES
- ◆ 900,000+ PARTS AVAILABLE
- ◆ PREFERRED NAPA ELITE PRICING
- ◆ UPDATED REBATE SYSTEM

4% on quarterly purchases above \$7,500 on qualifying products

5% on quarterly purchases above \$10,000 on qualifying products, and supply their email or phone number

***For more information, contact your local NAPA store**

© 2026 National Automotive Parts Association LLC.